

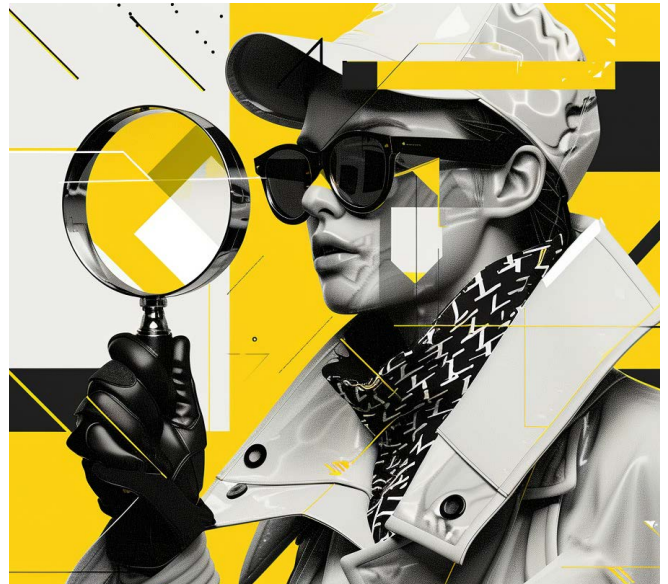
Recognize problems early with Risk Radar Management

RISK RADAR SOFTWARE, THE EARLY WARNING SYSTEM FOR UNEXPECTED RISKS IN YOUR SUPPLY CHAIN

Our Risk Radar software offers you the unique selling point that it fully automatically identifies shortfalls in the entire, cross-plant logistics chain and graphically visualizes them for the user, including their impact on the entire logistics chain.

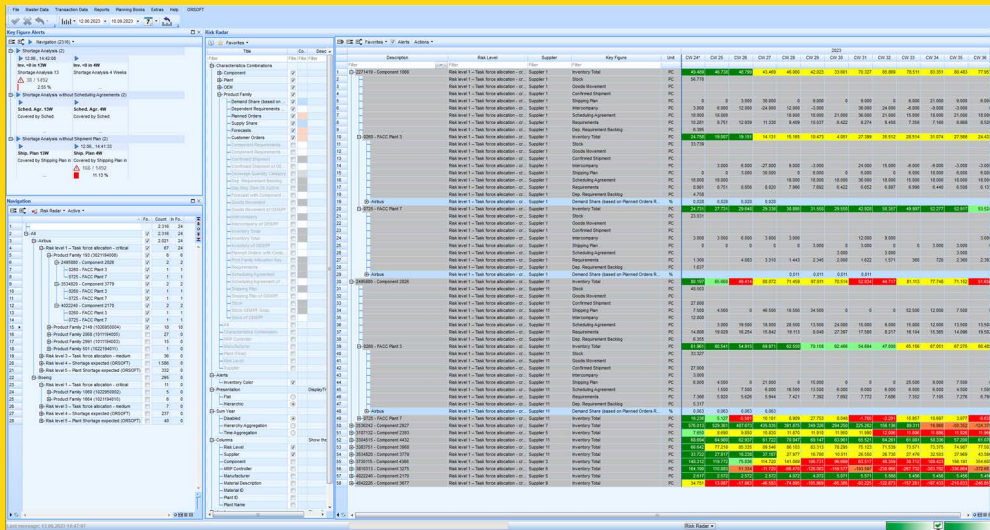
This enables the user to solve problems before they even occur, which automatically leads to improved delivery reliability. A key component is the direct linking of suppliers of a purchased part and the associated customers across the entire production structure.

Thanks to rapid implementation based on the ERP system, focusing on relevant materials and enabling collaborative optimization measures, Risk Radar increases service levels, analysis efficiency and delivery performance while minimizing contractual penalties.



Functional overview of the software

- **Automatic decomposition of large production models:** Our Risk Radar software automatically breaks down large production models into relevant, lean logistics chains from the supplier to the end customer. This is important because the actual advantages of just-in-time logistics (e.g. reduction of storage capacities and storage costs as well as optimization of throughput times in production) no longer function smoothly in times of disruptive supply chains.
- **Analysis of bottlenecks:** Using Risk Radar Management, bottlenecks are analyzed through alarm-based user guidance and color-coded display of layer stocks. Alert-based user guidance and a color-coded display of stock levels give you a quick overview of challenges in the supply chain.
- **Identification of potential bottlenecks:** Germanedge's Risk Radar Assessment Tool ensures that potential bottlenecks and their impact on the end customer of relevant sales materials are identified. This creates a central, holistic view of the logistics chain. This enables the company and its partners to identify challenges in the chain at an early stage and work together to develop solutions to avoid bottlenecks.
- **Automatic assignment of a component to a risk level (e.g. critical, medium, low):** Based on defined scarcity parameters, a risk level is assigned to each component in production. This avoids bottlenecks and performs an analysis of demand and supply of components to automatically categorize components according to their shortage risk.





User interface of our Supply Chain Risk Radar


Who benefits from the Risk Radar software?


- **Supply Chain Manager:** For monitoring and optimizing the supply chain.
- **Risk managers:** For identifying and assessing risks in various business areas.
- **Production managers:** For early detection of production risks and bottlenecks.
- **Purchasing manager:** For the assessment and management of supplier risks.
- **Sales manager:** To ensure product availability and customer satisfaction.

Vorteile unserer Risk Radar Software

 **Increase in service level by 1-3%:** Early detection of potential component shortages creates room for maneuver to solve problems together with customers and suppliers so that the service level is increased.

 **Increase analysis efficiency by 50-80%:** Analysis efficiency is significantly increased through a centralized, standardized application for all departments involved and by automatically identifying potential component shortages in huge data models without manual intervention. By classifying components according to scarcity, it is possible to focus on the most urgent problems.

 **Supplier delivery performance is increased by 2%:** The comparison of the supplier's delivery schedule with the actual deliveries in order to identify and communicate discrepancies and achieve a better negotiating position leads to an increase in delivery performance of at least 2%.

 **Reduction or even avoidance of contractual penalties:** By transparently comparing the customer's delivery call-offs with its delivery schedule, contractual penalties are avoided and a holistic overview of the available stocks at all locations is created.

Contact us!

